

ADVERTISEMENT

SUSIE MCCABE FEMME FATALITY  
02 - 27 AUG | 20:35 | ASSEMBLY GEORGE SQUARE STUDIO TWO



CLICK FOR TICKETS

EDFRINGE.COM

SHOWS

MERCH

Comments or questions about The Fringe? [CONTACT US](#)



TEXT RESIZE A B C

ACCOUNT

BASKET

ALL SHOWS

VENUES

BOX OFFICE INFORMATION

JOIN & SUPPORT

PLAN YOUR FRINGE

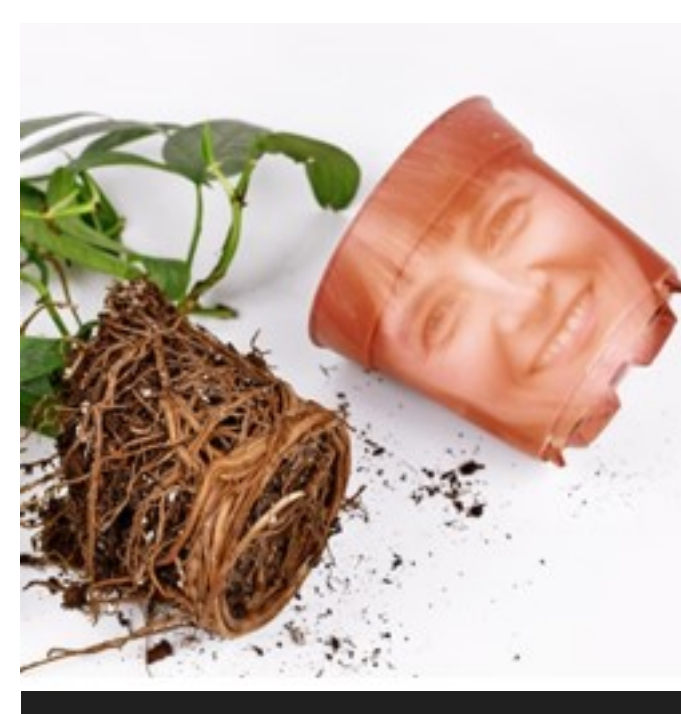
ACCESSIBILITY

FIND SHOWS

# Adaptation: Enough Already



IN PERSON



Theatre (new writing, music)

Venue 43

theSpace @ Symposium Hall – Annexe

11:40

Aug 26

1 hour 10 minutes

Suitability: 16+ (Guideline)

Country: United Kingdom – Scotland

Group: Vegas Nerve Productions / Samantha Graham

Warnings and additional info: Strong language/swearing

Accessibility:

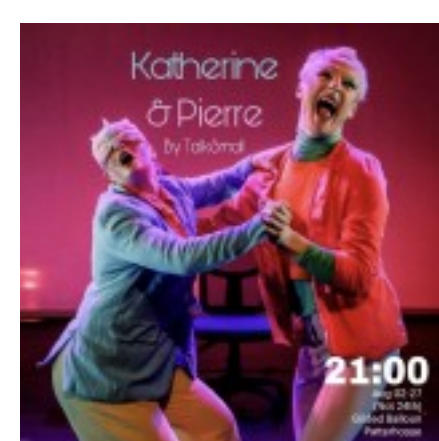


May not apply to all performances. You'll find more information about accessible performances and how to book tickets in the [accessibility tab](#) below.

Babes in arms policy: Babies do not require a ticket

Policy applies to: Children under 18 months

DATES, TIMES AND PRICES



- Show details
- Accessibility
- Reviews
- Venue map

Audience

Professional

Post your review

Christopher Kelly

1 day ago

Wonderful show. I'm a fan of Adaptation, and there was just enough of an homage there to keep me entertained, but this is so, so much more. A tale of motherhood, of invisible heroes, of losing your own identity to everyday life.

Amazingly delivered, with off stage elements, a live band, audience interaction. It's very close to being a masterpiece, and one of the best shows I've seen this year. Bravo.

[Report abuse](#)

Tony Pupo

1 day ago

Amazing show! I didn't know what to expect and was very pleasantly surprised. Go see this show!!

This artist created a show that introduced us to her private thoughts in such an engaging way. Her inner monologue is very self deprecating, like all of ours, scolding ourselves for not living up to some insane set of out of reach standards. The original music as well as the musician/singer was wonderful. I loved her voice and her musical abilities.

The artist introduced herself personally, off stage, as genuine. I could not stop smiling throughout the show as it is so creative. Bravo!

[Report abuse](#)

Lisa Jones

1 day ago

A marvelous show, so layered and thought provoking. The musical accompanists and vocals were beautiful. We were approached by the writer's son the day before while he was handing out flyers to the show and were so impressed by his excitement and passion for the show and his Mom, that we had to go meet the woman that raised such an endearing young man. A must see show that is destined to be produced on a much larger scale.

[Report abuse](#)

Máté Tózsér

1 day ago

I really liked Sam's use of the space, especially the projections that took us from a seminar to a train to a home. It was a great reminder to prioritise your own mental health and not give too much of a fuck about what other people expect of you. Plus the live music was lit! Highly recommended!

[Report abuse](#)

Jennifer Kehl

3 days ago

As a woman who has been raised to subconsciously please and give my all for other people and never expect in return (especially to men) – this show was a wake up call to what that does to the physical and mental health. A truly heartfelt performance, clever writing, and amazing live music – this show was so inspiring and such a great time. Plus the projections were really cool. 10/10 recommend! Go see it!!

[Report abuse](#)

Samantha Graham

5 days ago

Adaptation: Enough Already \*\*\*

Annexe at theSpace @ Symposium Hall until 26 August

We all know that it is important to take time to focus on ourselves, but that is much easier said than done. Vegas Nerve's production highlights that even for a corporate trainer who helps others to master their mindset, encourages vagus breathing and promotes self-care, it is extremely difficult.

Underneath a confident exterior, the trainer played convincingly by writer Samantha Graham, is a struggling woman who is too overwhelmed to practice what she preaches. The story bounces between her work life and full-on home life and the difference between these two personas is quite jarring.

Taking inspiration from Charlie Kaufman's film Adaptation and Gabor Maté's book The Myth of Normal, this show is a story of personal struggle that we are likely to have heard before and it certainly won't be the last time we do. What makes this piece different is its inclusion of live music and its unique projections designed by John McGeoch. The projections are well incorporated and transport the audience through time, space and into the madness of her unsettled mind. It feels dreamlike at points and never excessive.

Exploring universal stresses such as intense work schedules, constant commuting and family commitments, many will closely relate to the piece. Suzanne O'Brien

[Report abuse](#)

EDIT

Kirsty Simms

9 days ago

Excellent show. Thought provoking, very well acted. Would thoroughly recommend.

[Report abuse](#)

Participants – for further details on our audience and published review policies, including how to add or opt out of reviews, please [click here](#).

DATES, TIMES AND PRICES

Edinburgh Festival Fringe Society

180 High Street  
Edinburgh EH1 1QS  
United Kingdom

+44 (0)131 226 0026

© 2023 EFFS Registered  
Charity SC 002995

Newsletter sign up

Sign up to our email and receive the latest news and updates.

- visitor
- participant

I have read and agree to the [terms and conditions](#)

SIGN UP

Thank you to our sponsors



JOHNNIE WALKER  
PRINCES STREET

Thank you to our sponsors and all of our [supporters](#)

on edfringe.com

- Welcome to the Edinburgh Festival Fringe
- Participant
- Arts industry
- Media
- Advertising
- Jobs
- Shop